



Oracle & VMWare Desktop Datacenter

Troy Ligon
IBM

The Task

I would like to check out the features of Oracle 10g, Oracle RAC, and Oracle ASM running on a Linux cluster.

The Problem

- I don't have a pile of hardware I can dedicate to this task.
- I don't have the in-house expertise to properly install and configure all of this hardware & software.

The Solution

Oracle has partnered with VMWare and Linux vendors RedHat and Novell to provide a pre-configured environment called:



Desktop Datacenter

What IS VMWare?

- VMWare is software that simulates one or more Virtual Machines on your Windows PC.
- These Virtual Machines are entire computers (including processor, memory, hard drive, display adapter, network adapter, etc.) simulated in software.
- Amongst other neat tricks, this allows you to run different operating systems within these Virtual Machines.

Desktop Datacenter

Windows XP Host O/S

VMWare Simulated Hardware  vmware®

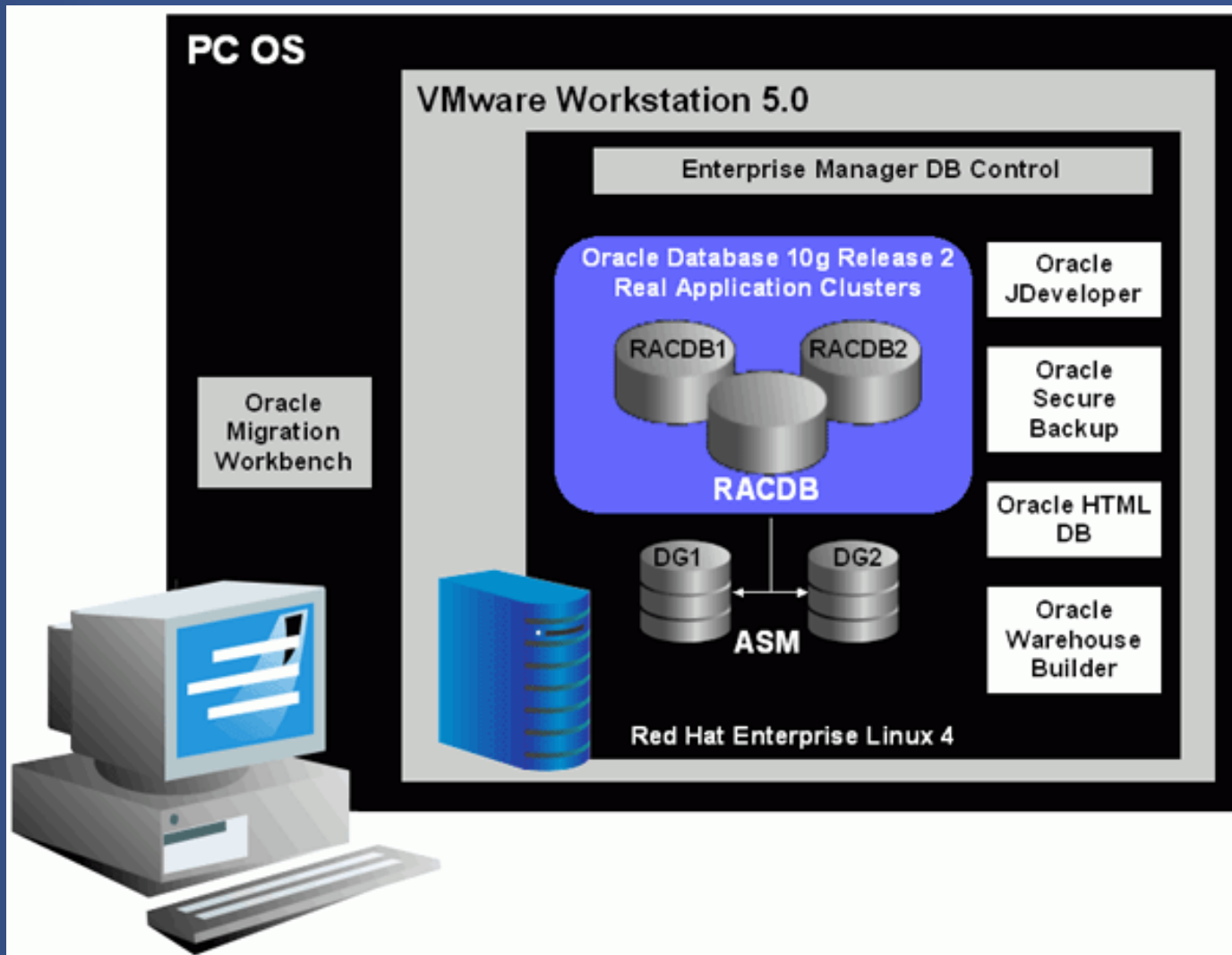
Linux Client O/S



Oracle Database 10g R2
Real Application Clusters
Automatic Storage Management
HTML DB
JDeveloper



Desktop Datacenter



Desktop Datacenter

This sounds great!

What do I need to run it?

Windows PC with:

500Mhz CPU

1gig RAM

12gig Diskspace

So how do I get it?

www.oracle.com/technology/tech/linux/vmware/

Desktop Data Centers: Oracle-on-Linux VMware Evaluation Tool Kits - Microsoft Internet Explorer

File Edit View Favorites Tools Help Links Google Google Maps MapQuest ICSRI SOUG TLBHOA VOICE

Back Search Favorites Media

Address <http://www.oracle.com/technology/tech/linux/vmware/index.html> Go

ORACLE
TECHNOLOGY NETWORK

ORACLE.COM TECHNOLOGY NETWORK PARTNERS STORE SUPPORT Welcome troy (Sign Out | Account)

SELECT COUNTRY

Downloads Documentation Forums Articles Sample Code Getting Started Tutorials Blogs

search site

PRODUCTS
Database
Middleware
Developer Tools
Enterprise Management
Applications Technology
Products A-Z

TECHNOLOGIES
BI & Data Warehousing
Grid
Java
Linux
.NET
Office
PHP
Security
Service-Oriented Architecture
Windows Server System
Technologies A-Z

COMMUNITY
About OTN
Oracle ACEs
TechBlast Newsletter
Oracle Magazine

Desktop Data Centers: Oracle-on-Linux VMware Tool Kits

Oracle, VMware, Red Hat and Novell have teamed up to provide everything you need to run a full Oracle Database 10g on Linux environment on your Windows desktop—including the operational infrastructure and step-by-step instructions on how to use Oracle Database 10g and Oracle Real Application Clusters.

Note: These kits are for evaluation and development purposes only. Oracle will not support any deployments of these packages.

Use your Desktop Data Center to:

- Deploy a fully preconfigured Oracle Database 10g and Real Application Clusters on Linux in less than an hour using a VMware virtual machine environment
- Try the self-study exercises on Oracle Database 10g features for yourself—including Oracle Real Application Clusters, Automatic Storage Management, and much more

Desktop Data Center on Red Hat	▶ Start Here
Desktop Data Center on Novell	▶ Start Here

For a more do-it-yourself approach to evaluating Oracle on Linux via VMware, see the [Oracle-on-Linux VMware Cookbook](#).

http://www.oracle.com/technology/software/htdocs/devlic.html?http://www.oracle.com/technology/tech/linux/vmware/vmware_redhat.h Internet

Development License - Microsoft Internet Explorer

File Edit View Favorites Tools Help Links Google Google Maps MapQuest ICSRI SOUG TLBHOA VOICE

Back Forward Stop Refresh Home Search Favorites Media Mail Print TV RSS People

Address http://www.oracle.com/technology/software/htdocs/devlic.html?http://www.oracle.com/technology/tech/linux/vmware/vmware_redhat.html Go

ORACLE
TECHNOLOGY NETWORK

ORACLE.COM TECHNOLOGY NETWORK PARTNERS STORE SUPPORT Welcome troy (Sign Out | Account)

SELECT COUNTRY

Downloads Documentation Forums Articles Sample Code Getting Started Tutorials Blogs

search site

PRODUCTS
Database
Middleware
Developer Tools
Enterprise Management
Applications Technology
Products A-Z

TECHNOLOGIES
BI & Data Warehousing
Grid
Java
Linux
.NET
Office
PHP
Security
Service-Oriented Architecture
Windows Server System
Technologies A-Z

COMMUNITY
About OTN
Oracle ACEs
TechBlast Newsletter
Oracle Magazine

Oracle Technology Network Developer License Terms

Export Controls on the Programs

Ticking the "I accept the License Terms and Export Restrictions" checkbox below is a confirmation of your agreement that you comply, now and during the trial term, with each of the following statements:

- You are not a citizen, national, or resident of, and are not under control of, the government of Cuba, Iran, Sudan, Libya, North Korea, Syria, nor any country to which the United States has prohibited export.
- You will not download or otherwise export or re-export the Programs, directly or indirectly, to the above mentioned countries nor to citizens, nationals or residents of those countries.
- You are not listed on the United States Department of Treasury lists of Specially Designated Nationals, Specially Designated Terrorists, and Specially

YES, I accept the License Terms and Export Restrictions and I acknowledge that I have reviewed and understood the agreement and agree to use the language I selected in entering into this agreement.

Oracle Employees: Under no circumstances are Oracle Employees authorized to download software for the purpose of distributing it to customers. Oracle products are available to employees for internal use or demonstration purposes only. In keeping with Oracle's trade compliance obligations under U.S. and applicable multilateral law failure to comply with

Done Internet

Development License - Microsoft Internet Explorer

File Edit View Favorites Tools Help Links Google Google Maps MapQuest ICSRI SOUG TLBHOA VOICE

Back Forward Stop Refresh Home Search Favorites Media

Address http://www.oracle.com/technology/software/htdocs/devlic.html?http://www.oracle.com/technology/tech/linux/vmware/vmware_redhat.html Go

About OTN
Oracle ACEs
TechBlast Newsletter
Oracle Magazine
Education
User Groups
Partner White Papers
All Community Resources

Oracle Employees: Under no circumstances are Oracle Employees authorized to download software for the purpose of distributing it to customers. Oracle products are available to employees for internal use or demonstration purposes only. In keeping with Oracle's trade compliance obligations under U.S. and applicable multilateral law, failure to comply with this policy could result in disciplinary action up to and including termination.

Note: You are bound by the Oracle Technology Network ("OTN") License Agreement terms. The OTN License Agreement terms also apply to all updates you receive under your Technology Track subscription.

The OTN License Agreement terms below supercede any shrinkwrap license on the OTN Technology Track software CDs and previous OTN License terms (including the Oracle Program License as modified by the OTN Program Use Certificate).

Oracle Technology Network Development License Agreement

"We," "us," and "our" refers to Oracle USA, Inc., for and on behalf of itself and its subsidiaries and affiliates under common control. "You" and "your" refers to the individual or entity that wishes to use the programs from Oracle. "Programs" refers to the Oracle software product you wish to download and use and program documentation. "License" refers to your right to use the programs under the terms of this agreement. This agreement is governed by the substantive and procedural laws of California. You and Oracle agree to submit to the exclusive jurisdiction of, and venue in, the courts of San Francisco,

I Accept

I Do Not Accept

Should you have any questions concerning this License Agreement, or if you desire to contact Oracle for any reason, please write:

http://www.oracle.com/technology/tech/linux/vmware/vmware_redhat.html Internet

Desktop Data Center on Red Hat: Downloads - Microsoft Internet Explorer

File Edit View Favorites Tools Help Links Google Google Maps MapQuest ICSRI SOUG TLBHOA VOICE

Back Search Favorites Media

Address http://www.oracle.com/technology/tech/linux/vmware/vmware_redhat.html Go

ORACLE
TECHNOLOGY NETWORK

ORACLE.COM TECHNOLOGY NETWORK PARTNERS STORE SUPPORT Welcome troy (Sign Out | Account)

SELECT COUNTRY

Downloads Documentation Forums Articles Sample Code Getting Started Tutorials Blogs

search site

PRODUCTS
Database
Middleware
Developer Tools
Enterprise Management
Applications Technology
Products A-Z

TECHNOLOGIES
BI & Data Warehousing
Grid
Java
Linux
.NET
Office
PHP
Security
Service-Oriented Architecture
Windows Server System
Technologies A-Z

COMMUNITY
About OTN
Oracle ACEs
TechBlast Newsletter
Oracle Magazine

Desktop Data Center on Red Hat

Note: This kit is for evaluation and development purposes only. Oracle will not support any deployments of this package.

Contents of this Kit:
This kit includes a comprehensive collection of technical whitepapers, seminars and customers and partner videos highlighting the benefits of Oracle Database 10g Release 2. Also included are Oracle By Example (OBE) step-by-step tutorials on how to use unique features of Oracle Database 10g. The provided database is preloaded with all the sample schemas required to complete the OBE tutorials. The kit also includes the following:

- Oracle Instant Client (Windows ODBC/JDBC/OCI support).
- Oracle Migration Workbench (Migrate most other databases into Oracle).
- Oracle Universal Installer (OUI, Used to install the VM).
- VMware Workstation v5.0.0 build 13124

Download the files:

- Important: See the Readme ([html](#) or [text](#)) for an overview of what is included in the Desktop Data Center kit, System Requirements, Installation and Configuration Options, and Using the Virtual Machine
- [RHEL4-10gR2-DVD1-1of2-Oracle-v2.0.zip](#) (required) (1,735,861,978 bytes, cksum: 2118810732)
- [RHEL4-10gR2-DVD1-2of2-Oracle-v2.0.zip](#) (required) (1,177,921,891 bytes, cksum: 1469060477)
- [EXTERNAL-RHEL4-10gR2-DVD2-VMware-v2.0.zip](#) (required) (56,674,792 bytes, cksum: 168263716)
- [EXTERNAL-RHEL4-10gR2-DVD2-Linux-v2.0.zip](#) (required). Note: This link will take you to the Red Hat website where you will need to register to begin downloading this additional software.
- See the [Oracle on Linux VMware Kit discussion forum](#)

Done Internet


File Download [X]

Some files can harm your computer. If the file information below looks suspicious, or you do not fully trust the source, do not open or save this file.

File name: ...-DVD1-1of2-Oracle-v2.0.zip
File type: WinZip File
From: download-east.oracle.com

Would you like to open the file or save it to your computer?

Always ask before opening this type of file



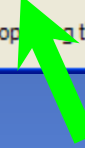
File Download [X]

Some files can harm your computer. If the file information below looks suspicious, or you do not fully trust the source, do not open or save this file.

File name: ...-DVD1-2of2-Oracle-v2.0.zip
File type: WinZip File
From: download-east.oracle.com

Would you like to open the file or save it to your computer?

Always ask before opening this type of file




File Download [X]

Some files can harm your computer. If the file information below looks suspicious, or you do not fully trust the source, do not open or save this file.

File name: ...10gR2-DVD2-VMware-v2.0.zip
File type: WinZip File
From: download-east.oracle.com

Would you like to open the file or save it to your computer?

Always ask before opening this type of file





- Enterprise
- Government
- Education
- Telecommunications
- Partners
 - Partner Programs
 - Business Partner Programs
 - Find a Business Partner
 - ISV Partner Program
 - ISV Resource Center
 - Red Hat Hardware Program
 - Hosting Partners
 - Runtime Partners
 - Distributor Partners
 - Partner Spotlights

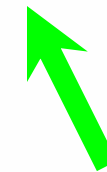


Red Hat Enterprise Linux and Oracle with VMware Workstation Evaluation

Red Hat, Oracle, and VMware are pleased to offer a complimentary 90 day evaluation of Red Hat Enterprise Linux and Oracle with VMware Workstation. If you have not yet registered for the Oracle and VMware components of this evaluation, please visit [Oracle](#) today. Once you have obtained the Oracle and VMware portions, we invite you to [complete your registration](#) and download Red Hat Enterprise Linux today.

For more information, visit:

- ▶ [Red Hat Enterprise Linux](#)
- ▶ [Oracle](#)
- ▶ [VMware Workstation 5.0](#)
- ▶ [Register for the evaluation](#)





redhat.com | - Microsoft Internet Explorer

File Edit View Favorites Tools Help Links Google Google Maps MapQuest ICSRI SOUG TLBHOA VOICE

Back Search Favorites Media

Address https://www.redhat.com/apps/webform.html?event_type=simple_form&eid=249 Go

 **redhat** SUPPORT STORE DOWNLOAD Search

Home Enterprise Linux Training Red Hat Network Truth Happens Fedora  **WORLDWIDE**

Red Hat, Oracle, VMware Trial Enrollment

Already created a redhat.com login? Enter it below to shorten the registration process.


Red Hat login:

Password:

Always log in automatically

Note: You should not use automatic login if you are using a public computer.
[More...](#)

[Forgot your password?](#)


Done  Internet

redhat.com | Create a Red Hat login - Microsoft Internet Explorer

File Edit View Favorites Tools Help Links Google Google Maps MapQuest ICSRI SOUG TLBHOA VOICE

Back Search Favorites Media

Address <https://www.redhat.com/apps/user/join/index.html> Go

 **redhat** [SUPPORT](#) [STORE](#) [DOWNLOAD](#) Search

[Home](#) [Enterprise Linux](#) [Training](#) [Red Hat Network](#) [Truth Happens](#) [Fedora](#) [WORLDWIDE](#)

Create a Red Hat login

A Red Hat login enables:

- purchase capabilities and faster checkout on the redhat.com store
- access to whitepapers, webcasts and product information


In addition, Red Hat Enterprise Linux customers will need a Red Hat login to:

- access updates, errata, source code and maintenance capabilities via Red Hat Network
- access Red Hat technical support, documentation and Red Hat's Knowledgebase


Select a Corporate or Personal Account

Create a corporate Red Hat login

Create a corporate login to provide a set of users the ability to centrally purchase or administer systems within an corporate organization (choose this option if you need to share a Red Hat login among system administrators, purchasing agents, IT management, etc).

 Create a personal Red Hat login

Create a personal login for the purpose of purchasing or administering your own personal systems (you should not

Done  Internet

Create a personal Red Hat login

Create a personal login for the purpose of purchasing or administering your own personal systems (you should not create a personal login if you are using a Red Hat login on behalf of a corporate organization).

I want to create new Red Hat logins under an existing corporate account: visit [this page](#).

Red Hat login information: (required)

Red Hat login:
Your Red Hat login must be at least 5 alphanumeric characters.

Password:
Your password must be at least 5 alphanumeric characters.

Confirm Password:

Always log in automatically

I would like to receive the latest Red Hat information via email

Contact Information: (* Required)

Greeting:

* First name:

* Last name:

Company:

Company:

Position:

* Street Address:

Address 2:

Address 3:

* City:

* State/Province: Choose your state

for other countries

* Zip/Postal code:

* Country: United States

* Phone:

Fax:

* Email:

Create Login





Red Hat, Oracle, VMware Trial Enrollment

Fields marked with an asterisk * are required

* First Name:

* Last Name:

* Title:

* Company Name:

* Address:

* City:

* State/Province(US or Canada):

State/Province(outside the US or Canada):

* Postal Code:

* Country:

redhat.com | - Microsoft Internet Explorer

File Edit View Favorites Tools Help Links Google Google Maps MapQuest ICSRI SOUG TLBHOA VOICE

Back Search Favorites Media

Address https://www.redhat.com/apps/webform.html?event_type=simple_form&eid=249 Go

* Postal Code: 33594

* Country: United States

* Telephone: xxx-xxx-xxxx

Fax: xxx-xxx-xxxx

* Email:

*Company Website (url)

Promotional code:

*Do you accept the terms outlined in the [Red Hat Trial Subscription Agreement](#)?

yes

I would like a Red Hat sales representative to contact me regarding this evaluation in 30 days.

Yes

Submit

Copyright © 2006 Red Hat, Inc. All rights reserved.
[Privacy Policy](#) [Terms of Use](#) [Patent Notices](#) [Company](#) [Contact](#)

Done Internet



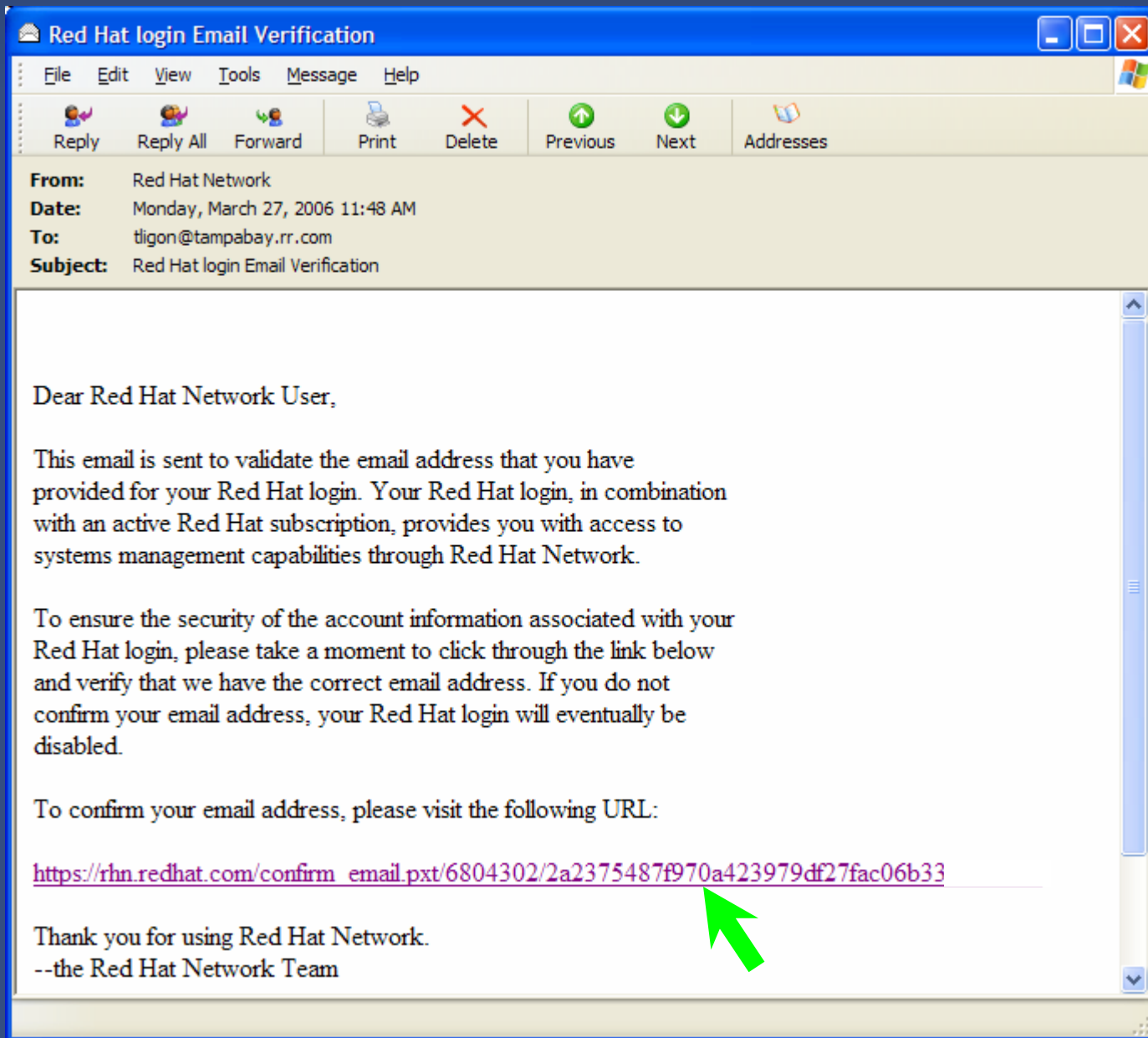
Thank you!

Thank you for choosing to evaluate Red Hat Enterprise Linux and Oracle with VMware Workstation. Your submission has been successfully received and a confirmation e-mail with further instructions will be sent to you shortly.

If you have not yet registered for the Oracle and VMware components of this evaluation, please visit [Oracle](#) today.

If you would like additional information about the products included in this trial, please visit:

- ▶ [Red Hat Enterprise Linux](#)
- ▶ [Oracle](#)
- ▶ [VMware Workstation 5.0](#)





Sign In

About RHN

Packages

Search

Thank you, the email address tligon@tampabay.rr.com has been confirmed.

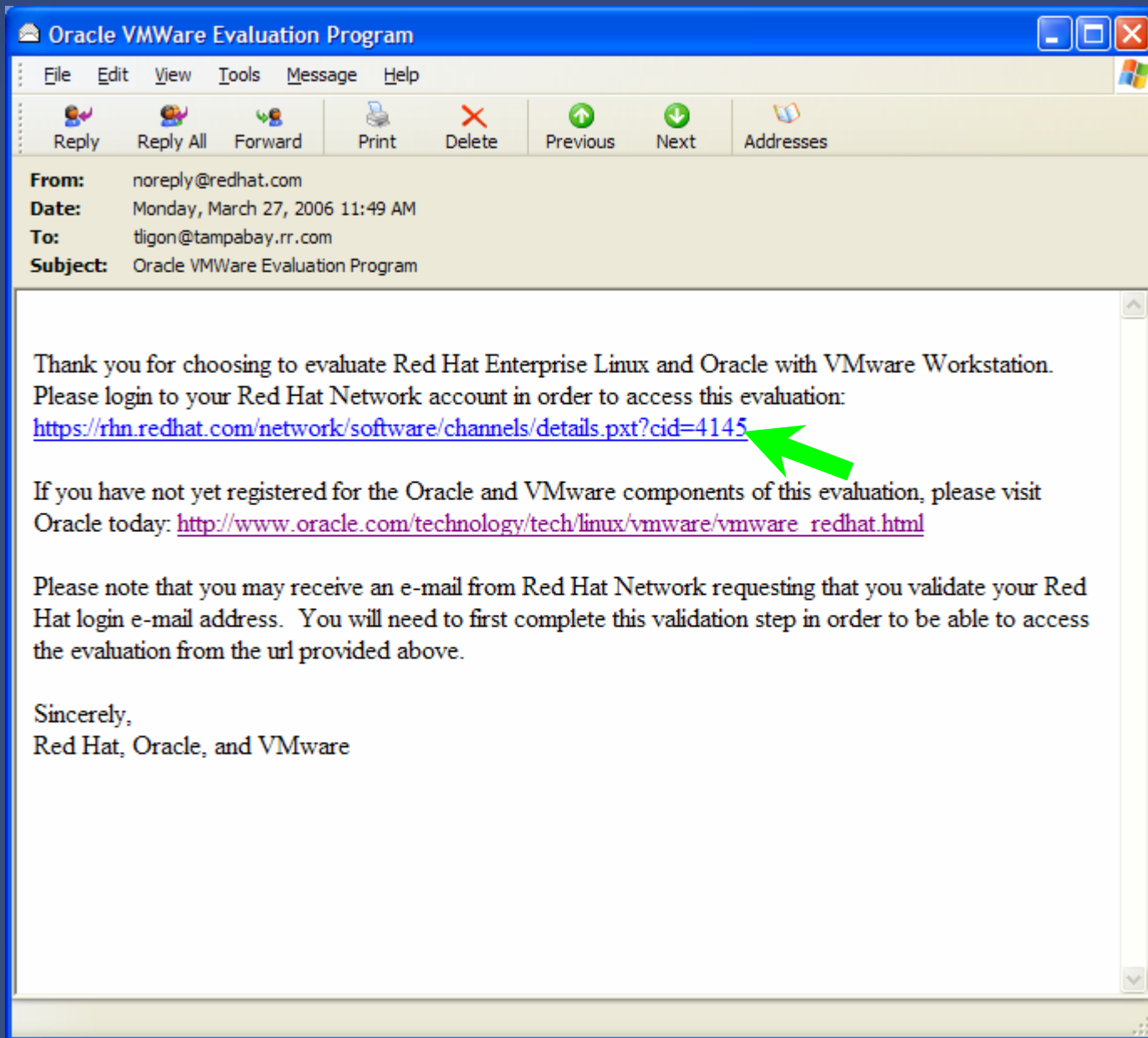
BUY NOW!

Add systems
Renew service
Manage & provision

Red Hat Network Email Confirmation

Thank you for confirming your e-mail address. Now, you can:

- Begin using the [Red Hat Network](#).
- Review [Your Account](#).
- Purchase some [Entitlements](#).





Sign In About RHN

Packages Search

Please Sign In

BUY NOW!

Add systems
Renew service
Manage & provision

**SOFTWARE
DOWNLOADS**

Click here.

To access purchasing, account or profile information, or to continue an expired session, please sign in below.

Red Hat Login:

Password:

Sign In

[Create Login](#) :: [Lost Login/Password?](#)



[Sign In](#) [About RHN](#)

Packages Search

BUY NOW!
Add systems
Renew service
Manage & provision

SOFTWARE DOWNLOADS
Click here.

Terms And Conditions

Please read the document displayed below and acknowledge your acceptance or rejection of the terms and conditions described within it by selecting either the "I accept" or "I do not accept" buttons below. You cannot continue your login to Red Hat Network without accepting these terms and conditions. If you accept these terms and conditions at this time, you will not need to accept them again, unless they change.

If you purchased your subscription outside the US, please review the Terms and Conditions here:
<https://www.redhat.com/licenses>

[Printer-Friendly Version](#)

Subscription Agreement

PLEASE READ THIS AGREEMENT CAREFULLY BEFORE PURCHASING OR USING RED HAT PRODUCTS AND SERVICES. BY USING OR PURCHASING RED HAT PRODUCTS OR SERVICES, CLIENT SIGNIFIES ITS ASSENT TO THIS AGREEMENT. IF YOU ARE ACTING ON BEHALF OF AN ENTITY, THEN YOU REPRESENT THAT YOU HAVE THE AUTHORITY TO ENTER INTO THIS AGREEMENT ON BEHALF OF THAT ENTITY. IF CLIENT DOES NOT ACCEPT THE TERMS OF THIS AGREEMENT, THEN IT MUST NOT PURCHASE OR USE RED HAT PRODUCTS AND SERVICES.

This Subscription Agreement, including all schedules and appendices hereto (the "Agreement") is between Red Hat, Inc. ("Red Hat") and the purchaser or



[Printer-Friendly Version](#)

Subscription Agreement

PLEASE READ THIS AGREEMENT CAREFULLY BEFORE PURCHASING OR USING RED HAT PRODUCTS AND SERVICES. BY USING OR PURCHASING RED HAT PRODUCTS OR SERVICES, CLIENT SIGNIFIES ITS ASSENT TO THIS AGREEMENT. IF YOU ARE ACTING ON BEHALF OF AN ENTITY, THEN YOU REPRESENT THAT YOU HAVE THE AUTHORITY TO ENTER INTO THIS AGREEMENT ON BEHALF OF THAT ENTITY. IF CLIENT DOES NOT ACCEPT THE TERMS OF THIS AGREEMENT, THEN IT MUST NOT PURCHASE OR USE RED HAT PRODUCTS AND SERVICES.

This Subscription Agreement, including all schedules and appendices hereto (the "Agreement"), is between Red Hat, Inc. ("Red Hat") and the purchaser or

If you reject the terms and conditions above by selecting the "I do not accept" button, you will be automatically signed out of your Red Hat Network account.

This will continue your login to Red Hat Network

This will log you out of Red Hat Network



LOGGED IN: troylign SIGN OUT

Your RHN Systems Errata Channels Schedule Help

Packages Search

Your RHN

Your Account

Your Preferences

Purchase History

Subscription Management

Thank you for accepting the Terms and Conditions!

Your RHN [?]

System Summary

No registered systems.

Action Summary

No recent actions.

BUY NOW!

Add systems
Renew service
Manage & provision

Relevant Errata ([View All](#))

Affected Systems

No errata apply to your systems.

SOFTWARE DOWNLOADS

Click here.



- Software Channels
- Channel Entitlements
- Download Software
- Relevant
- All
- Package Search

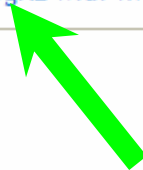
Download Software

Below is the list of most relevant software channels that have ISO images available for download. ([Not sure what an ISO is?](#)) Click the name of the desired software channel to be presented with your download options, or [view the complete list of software channels with ISO downloads.](#)

We have received reports of Internet Explorer having problems downloading ISOs. If you are experiencing problems, we recommend using a download manager program or another browser.

Channel Name

[Red Hat Enterprise Linux for Oracle 10gR2 with VMware Eval](#)



BUY NOW!
Add systems
Renew service
Manage & provision

SOFTWARE DOWNLOADS
Click here.



Software Channels

Relevant

All

Retired

Channel Entitlements

Download Software
Package Search



Red Hat Enterprise Linux for Oracle 10gR2 with VMware Eval

Details Errata Packages Subscribed Systems Downloads

License Agreement

Please read the License Agreement applicable to the software at <http://www.redhat.com/licenses> before downloading the software. By downloading the software, you agree to the terms and conditions of the applicable License Agreement.

BUY NOW!

Add systems
Renew service
Manage & provision

SOFTWARE DOWNLOADS

Click here.

Red Hat software is subject to the U.S. Export Administration Regulations and other U.S. and foreign law, and may not be exported or re-exported to certain countries (currently Cuba, Iran, Libya, North Korea, Sudan and Syria) or to persons or entities prohibited from receiving U.S. exports (including those (a) on the Bureau of Industry and Security Denied Parties List or Entity List, (b) on the Office of Foreign Assets Control list of Specially Designated Nationals and Blocked Persons, and (c) involved with missile technology or nuclear, chemical or biological weapons). You may not download Red Hat software if you are located in one of these countries, or otherwise affected by these restrictions. You are also responsible for compliance with foreign law requirements applicable to the import and use of Red Hat software. Moreover, any drop down menus should not permit registration of individuals/companies located in Cuba, Iraq, Iran, Libya, North Korea, Sudan and Syria.

ISO Image Downloads



ISO Image Downloads

It is recommended that you use `curl` to download the ISO images. If you use RHN and don't currently have `curl`, you may install it by running the command `up2date curl` from a shell prompt. See our [help on using curl or wget](#) for more information and options on downloading and using these ISO images.

Note: If you are downloading Red Hat Enterprise Linux ISOs, please be aware that each update release is a complete, functional version of the operating system and does not require previous releases. If you would like the **latest** version of Red Hat Enterprise Linux, you **only** need to download the ISOs for the latest update release.

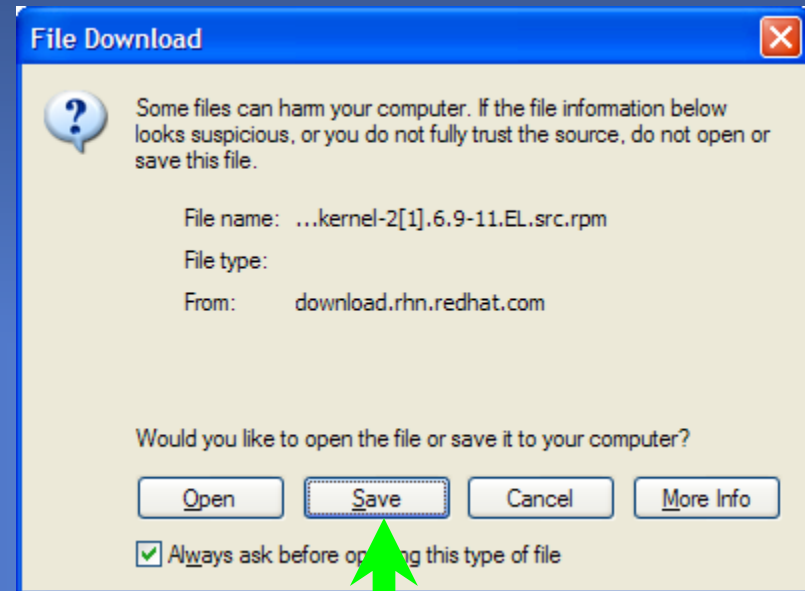
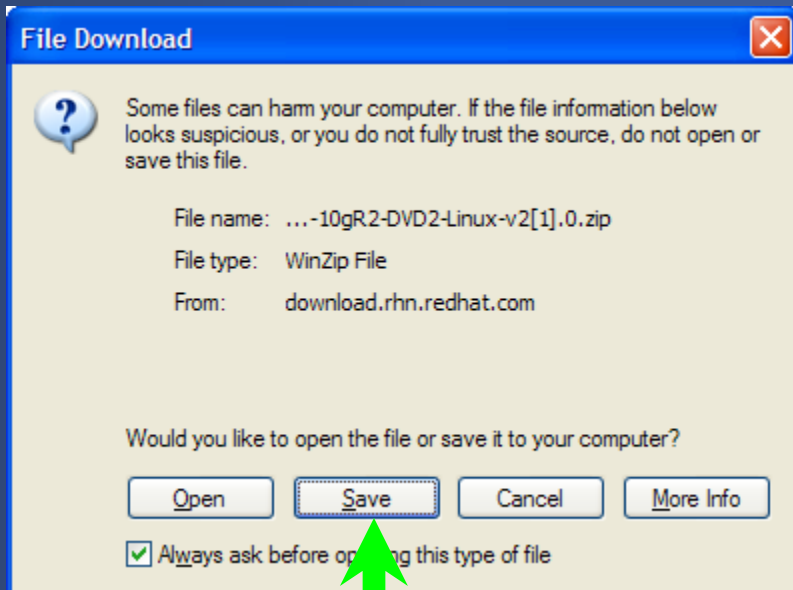
The following ISOs are available for this channel:

Red Hat, Oracle, VMWare Evaluation

ISO	Size	MD5 Checksum
EXTERNAL-RHEL4-10gR2-DVD2-Linux-v2.0.zip	902M	b12e923f571c1475c6277512e3028068

Kernel 2.6.9-11 Source RPM

ISO	Size	MD5 Checksum
kernel-2.6.9-11.EL.src.rpm	37M	708e5239dd9d9a9a425d0f5d77489806



What Do I Have?

DVD1-1of2-Oracle-v2.0.zip

DVD1-2of2-Oracle-v2.0.zip

DVD2-VMWare-v2.0.zip

DVD2-Linux-v2.0.zip

DVD2-kernel-v2.6.9-11.EL.src.rpm

Unzip them all into the same dir and you end up with the following (approx. 3.65gig):

Disk1

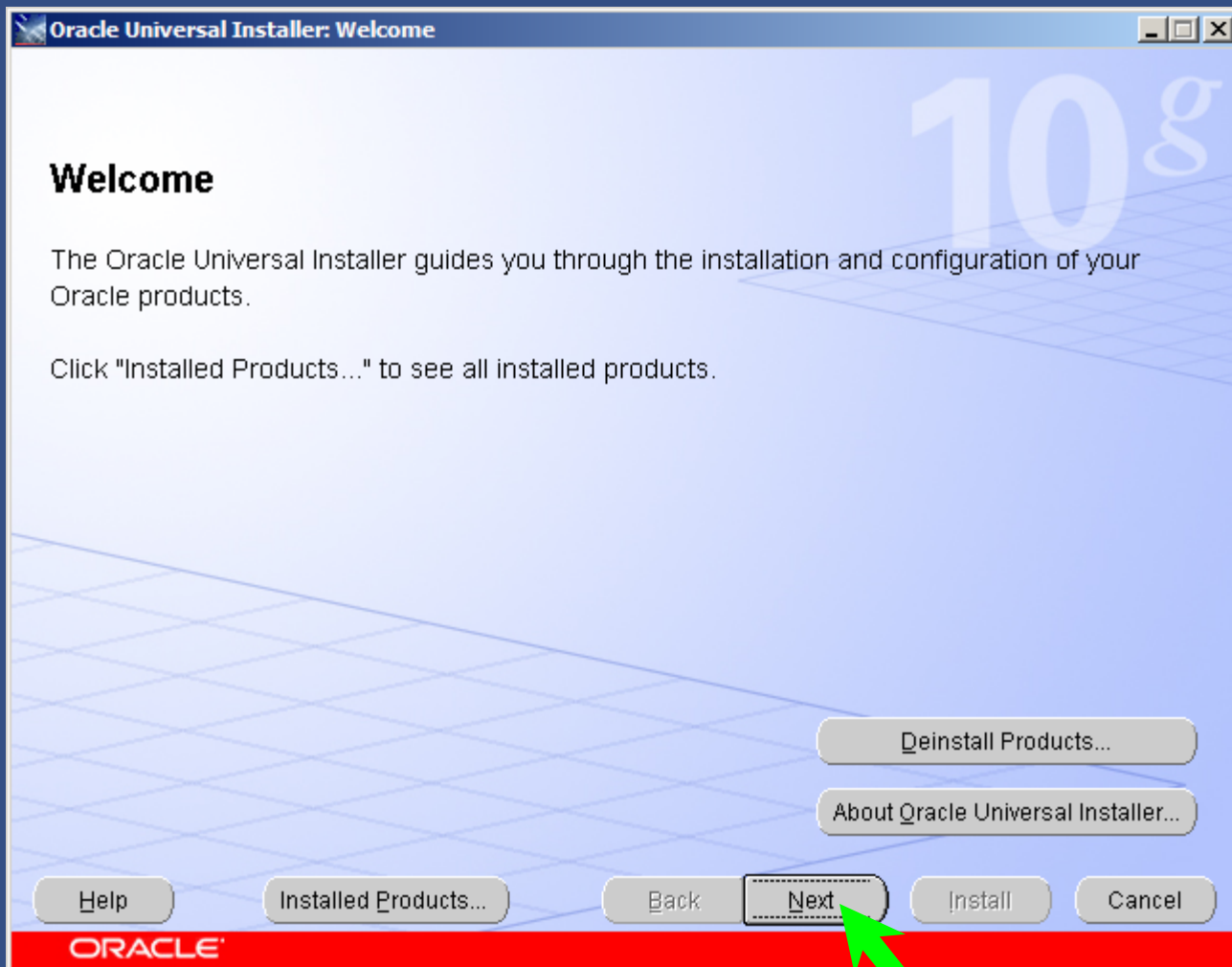
Disk2

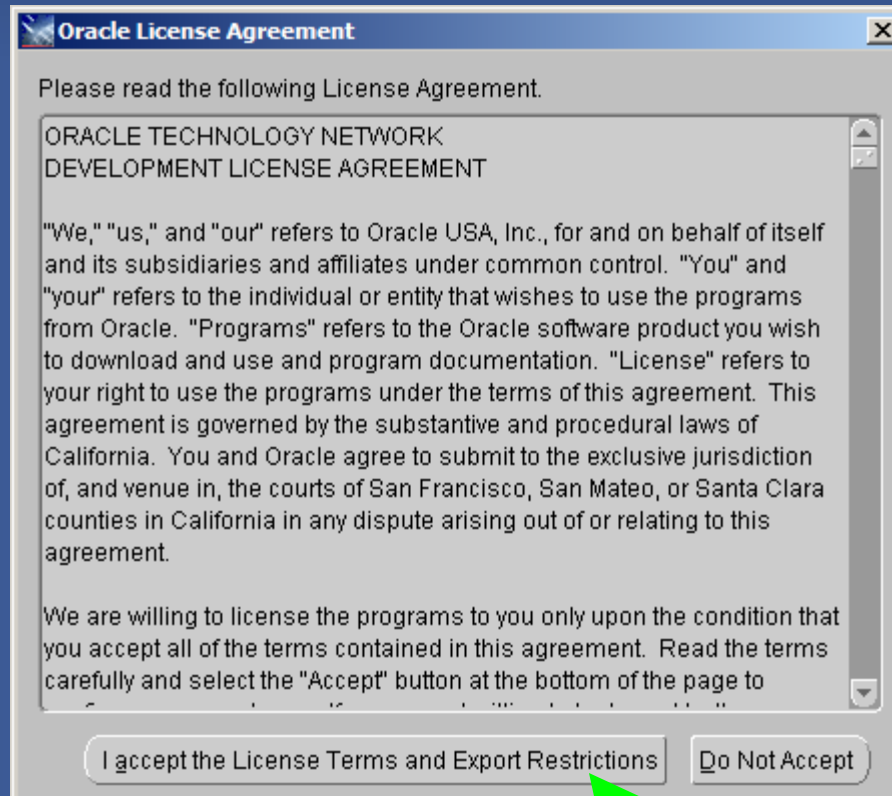
readme_oracleonInxeval.txt

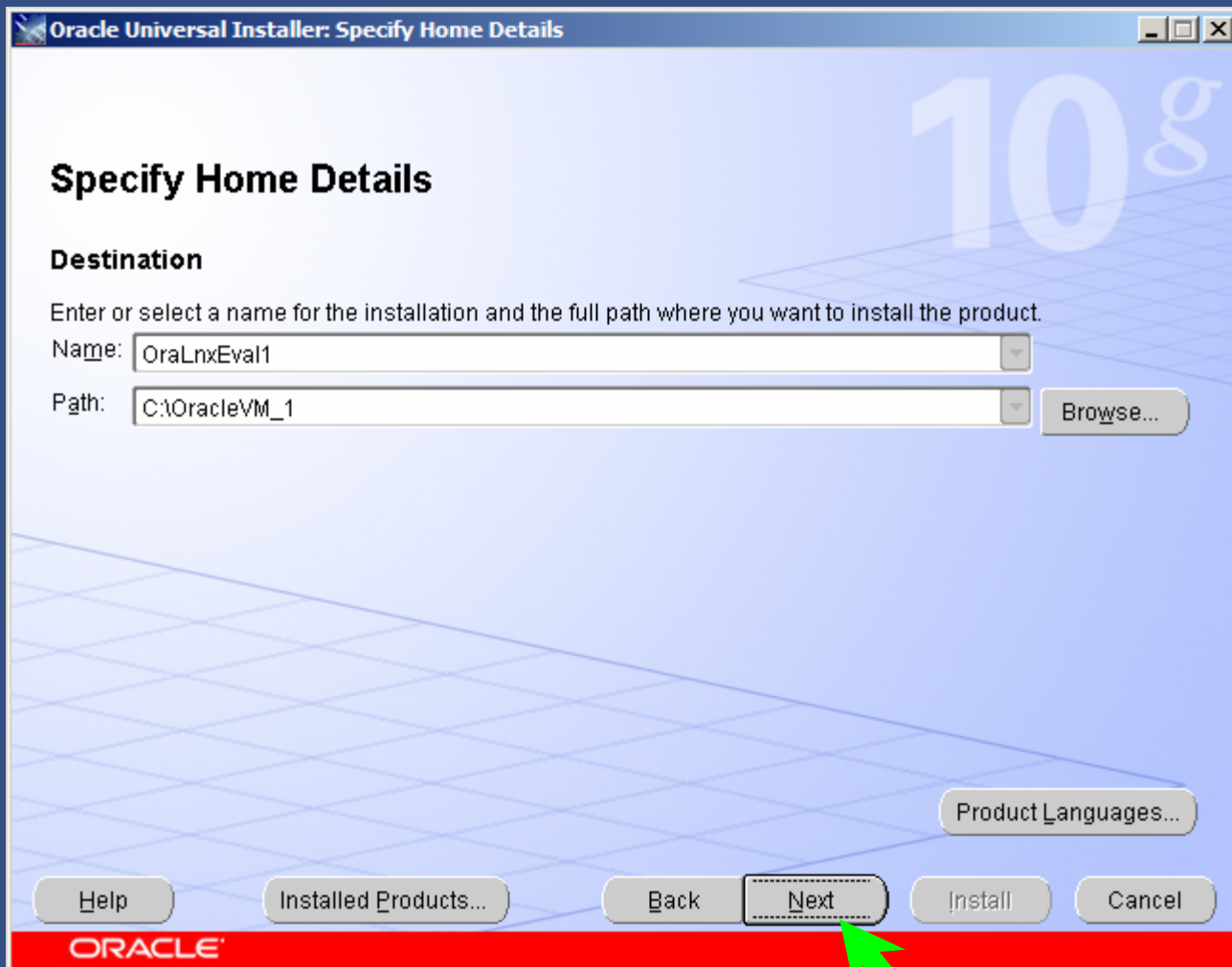
README_RedHat.pdf

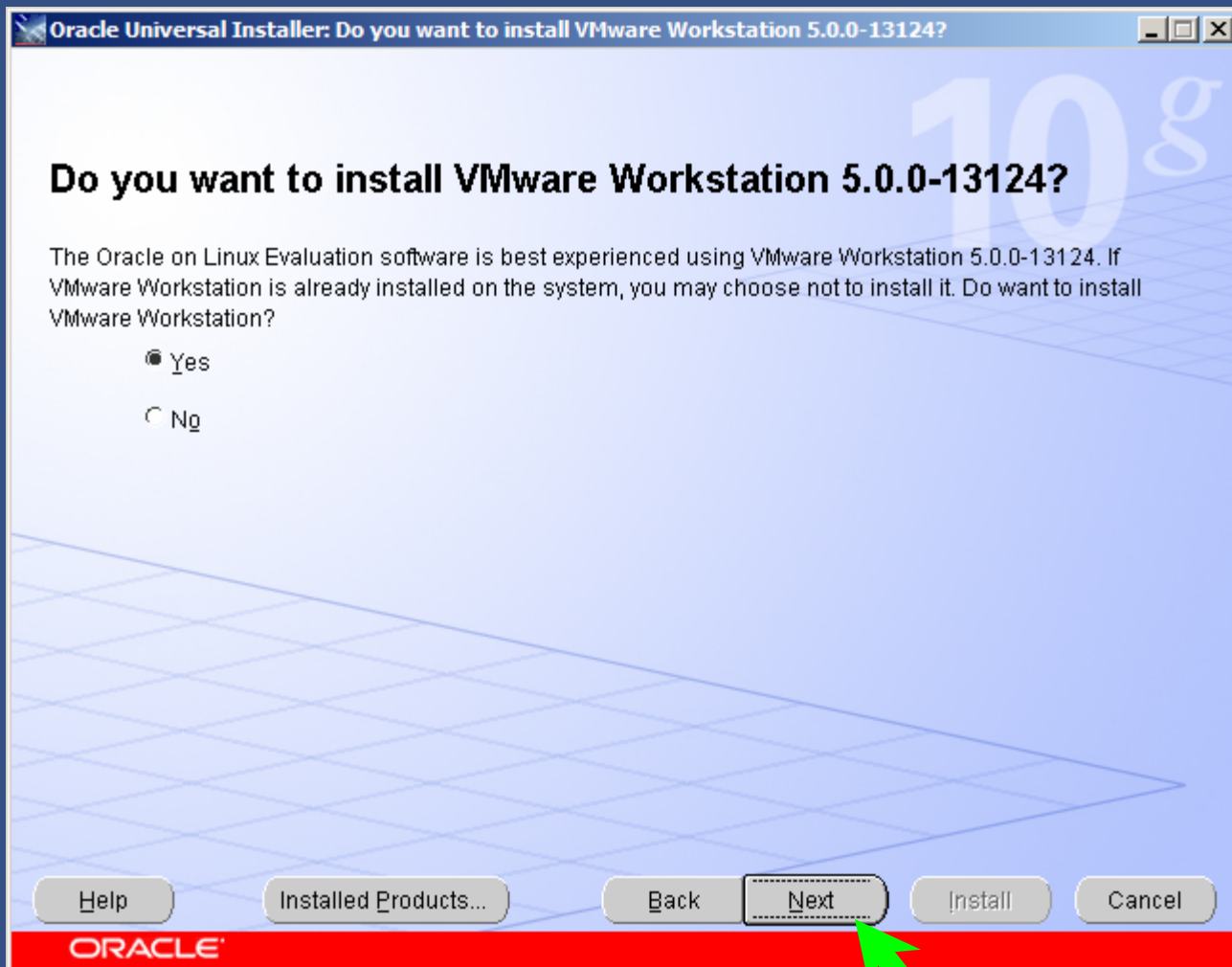
Run the Install

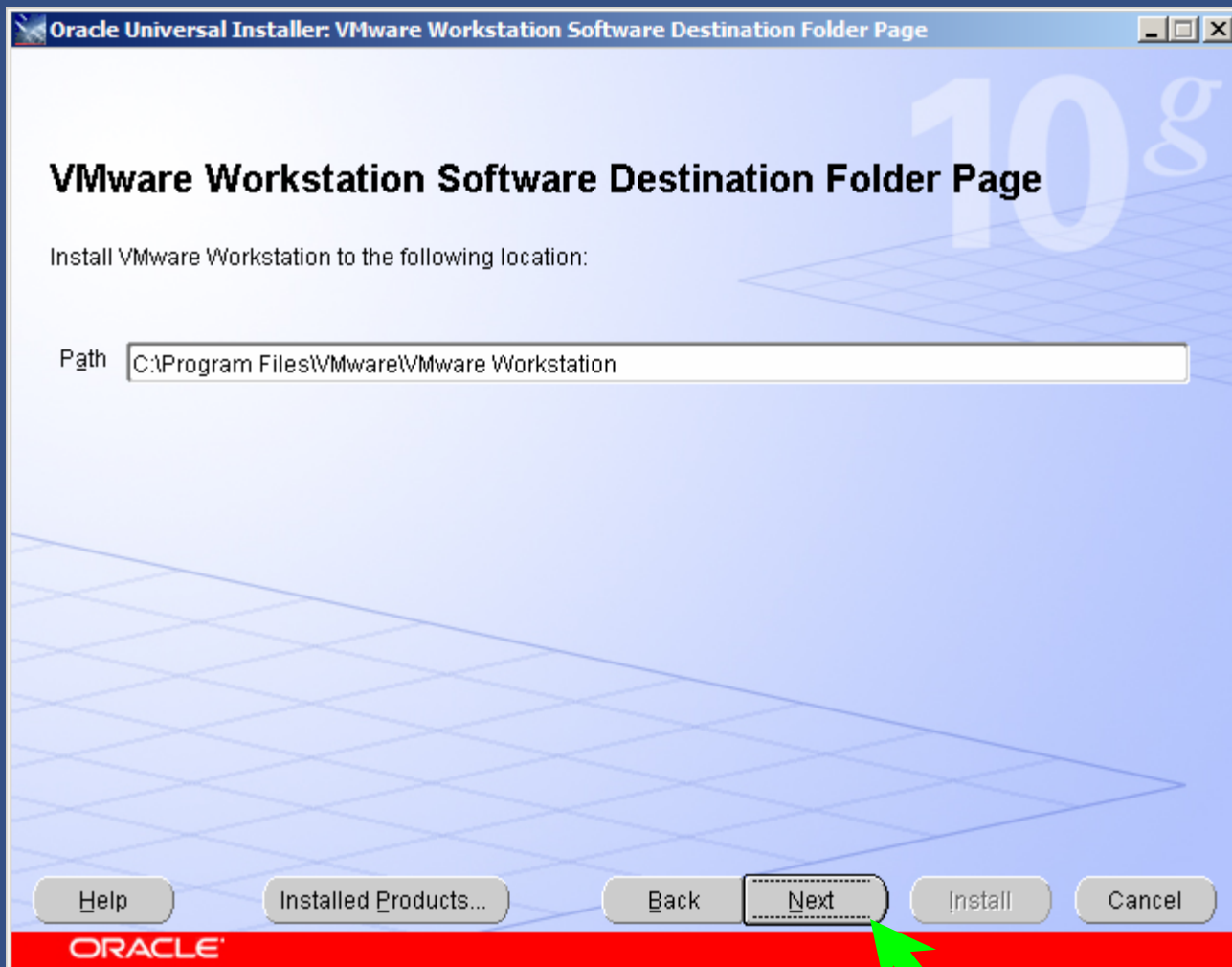
Disk1\install\setup.exe











Oracle Universal Installer: VMware Registration Information

VMware Registration Information

You may obtain a trial licence from VMware's website '<http://www.vmware.com/vcommunity/technology/vm/oracle.html>'.

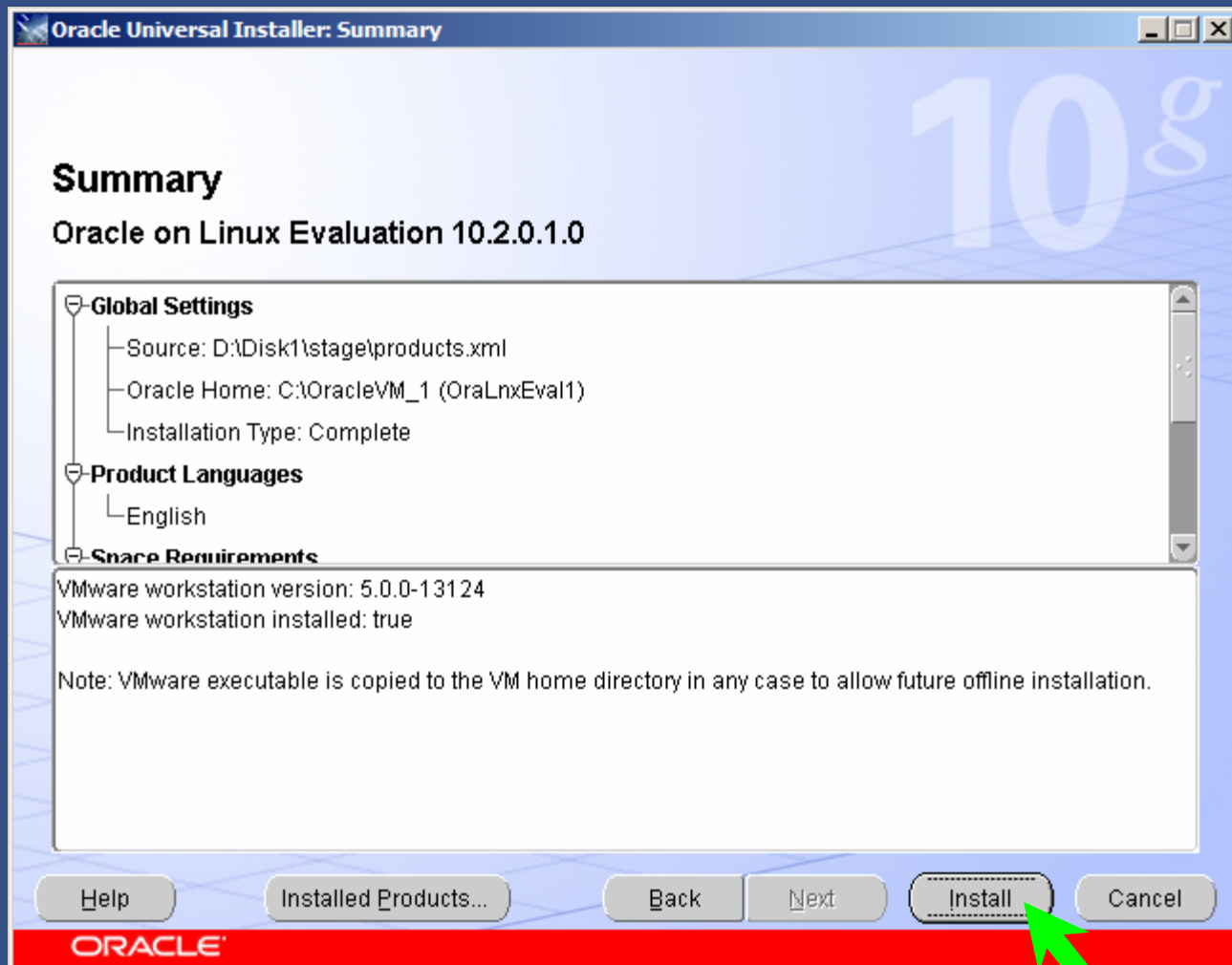
Username:

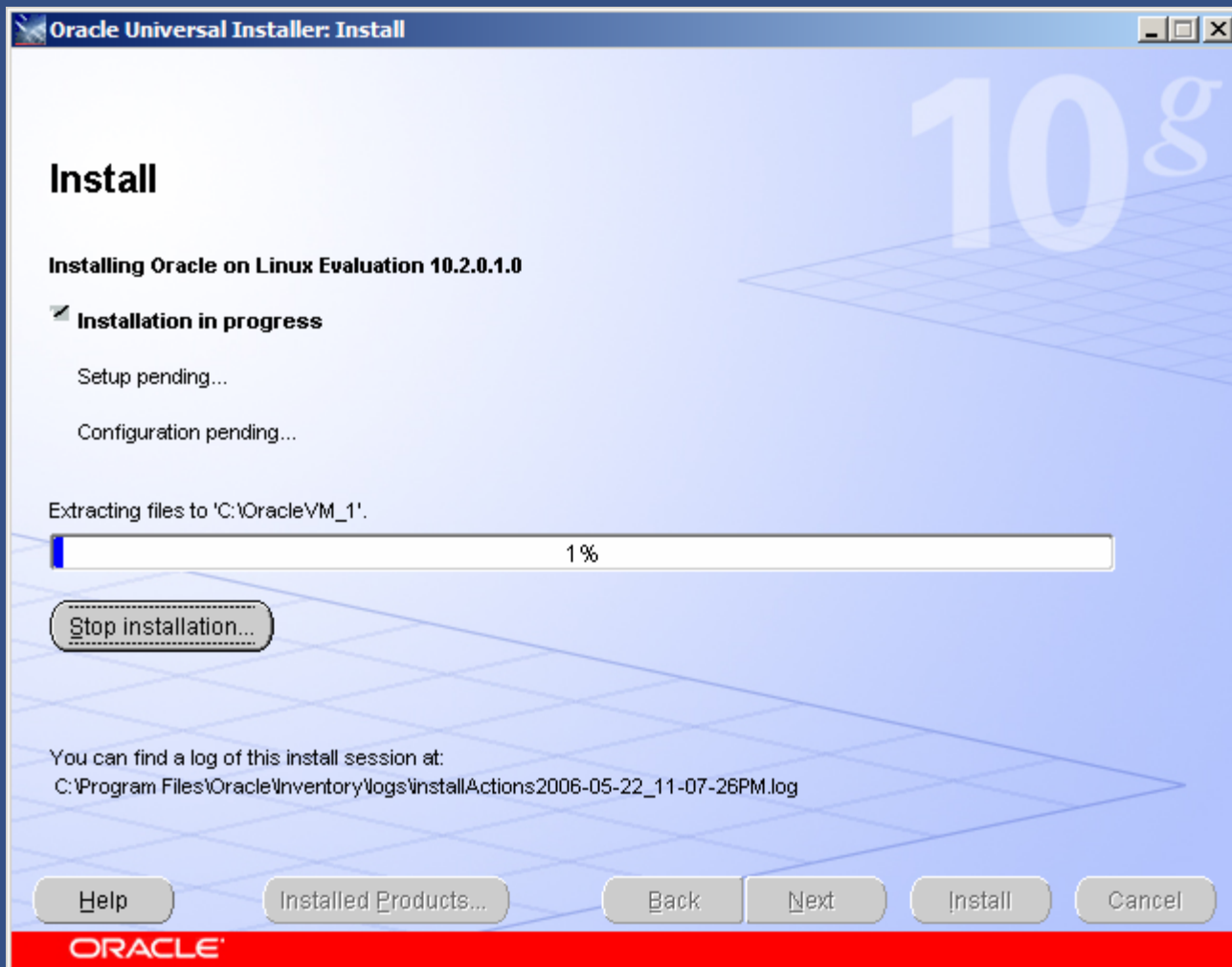
Company:

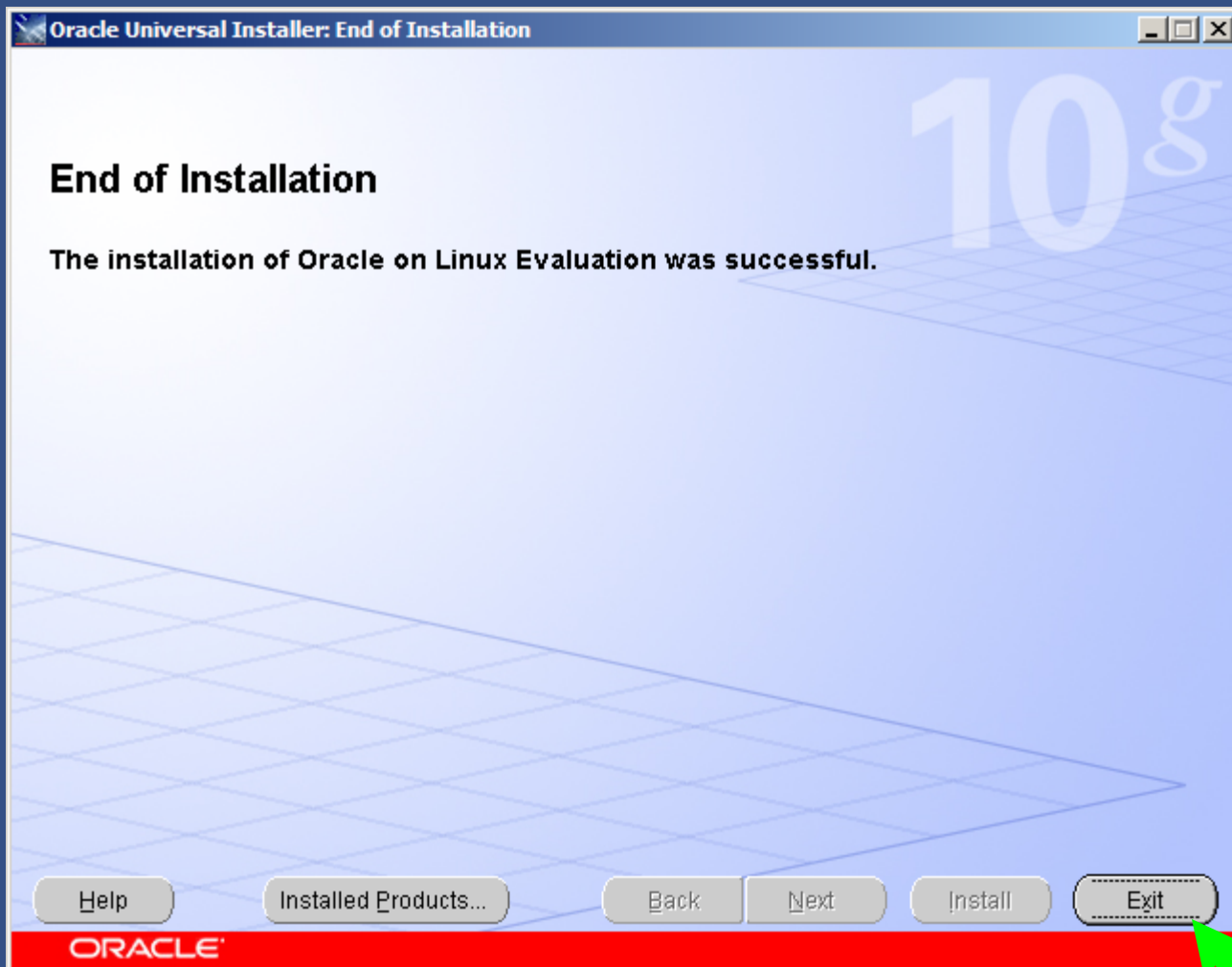
VMware Serial Number (xxxxx-xxxxx-xxxxx-xxxxx):

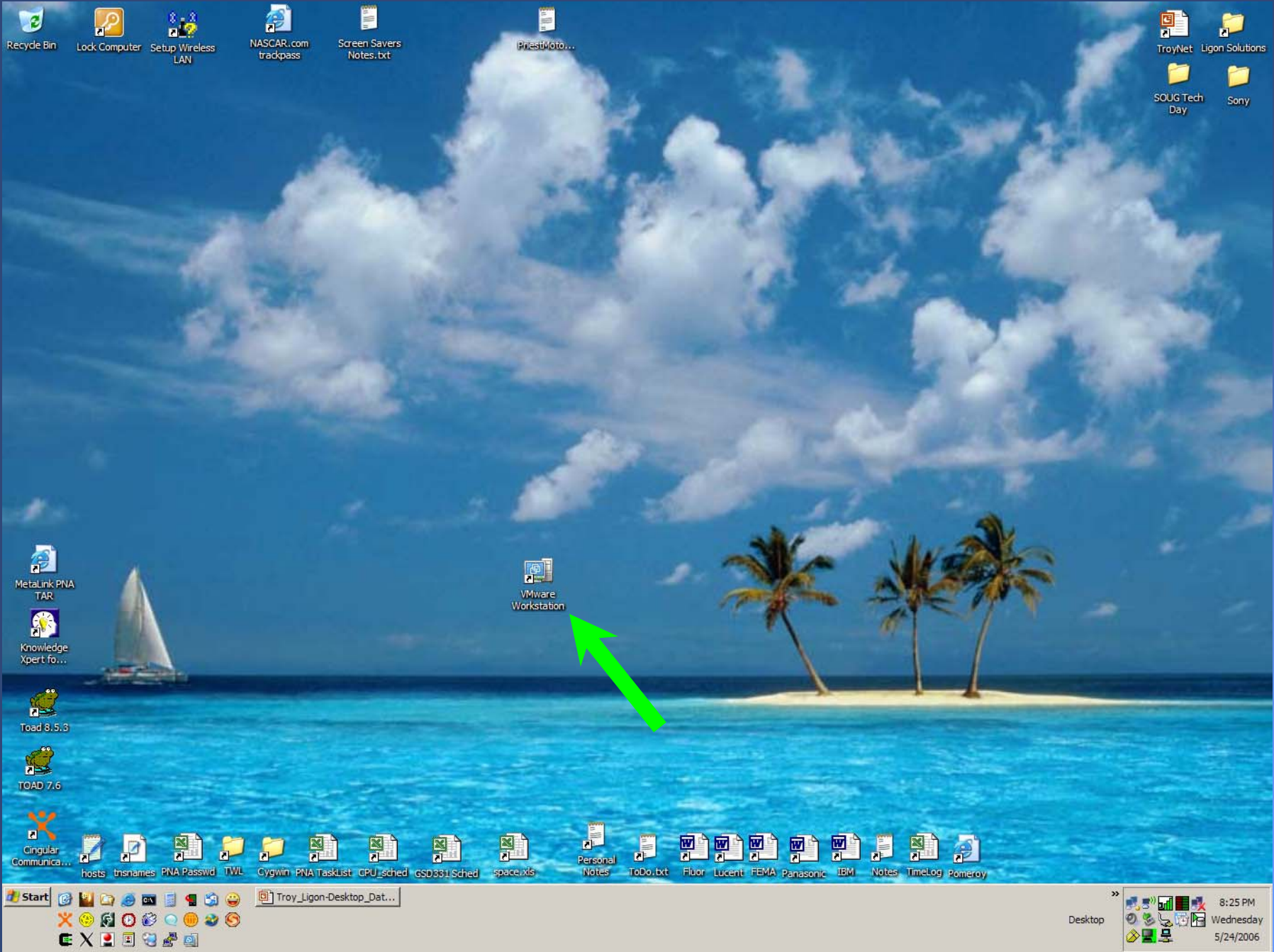
ORACLE

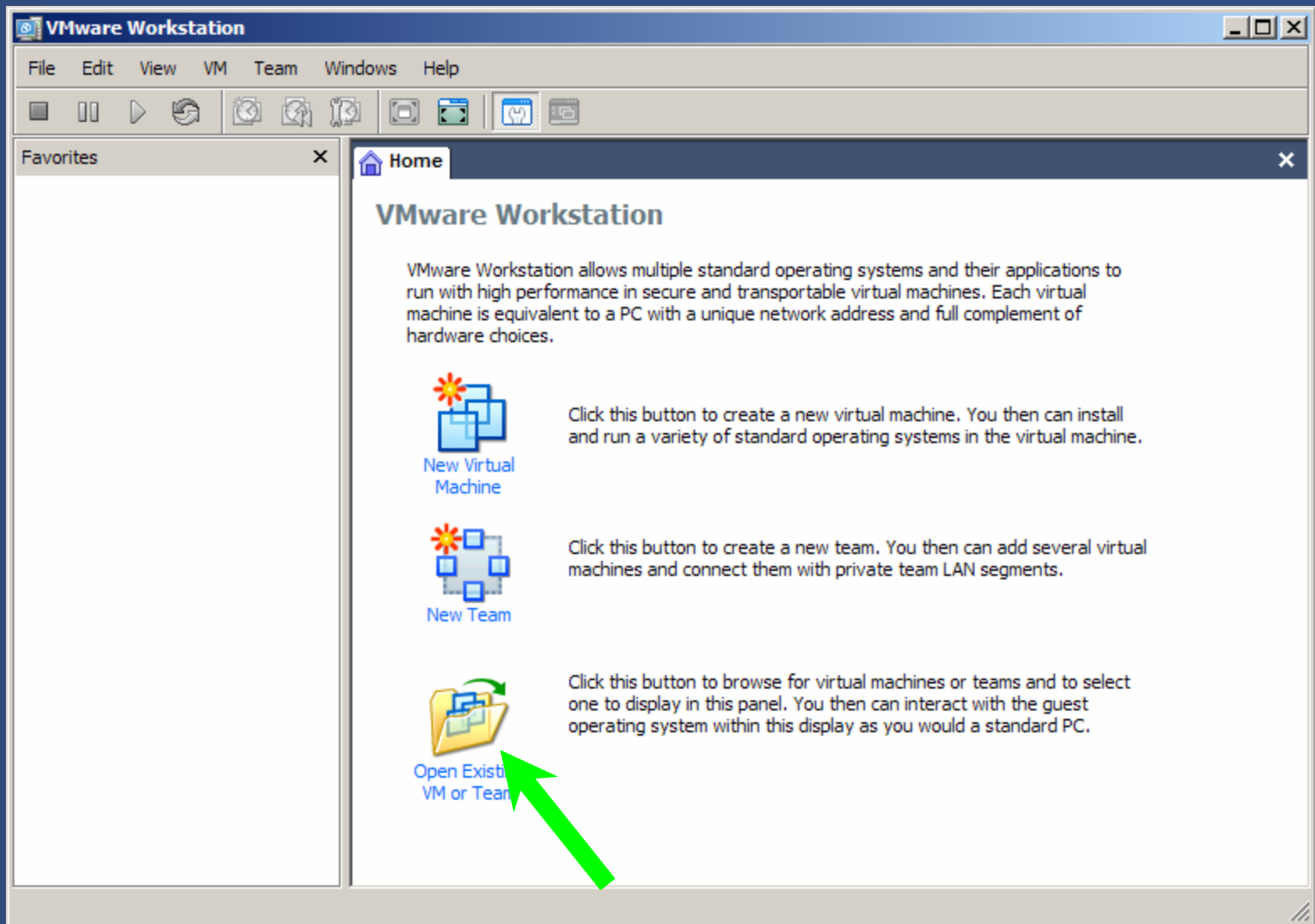


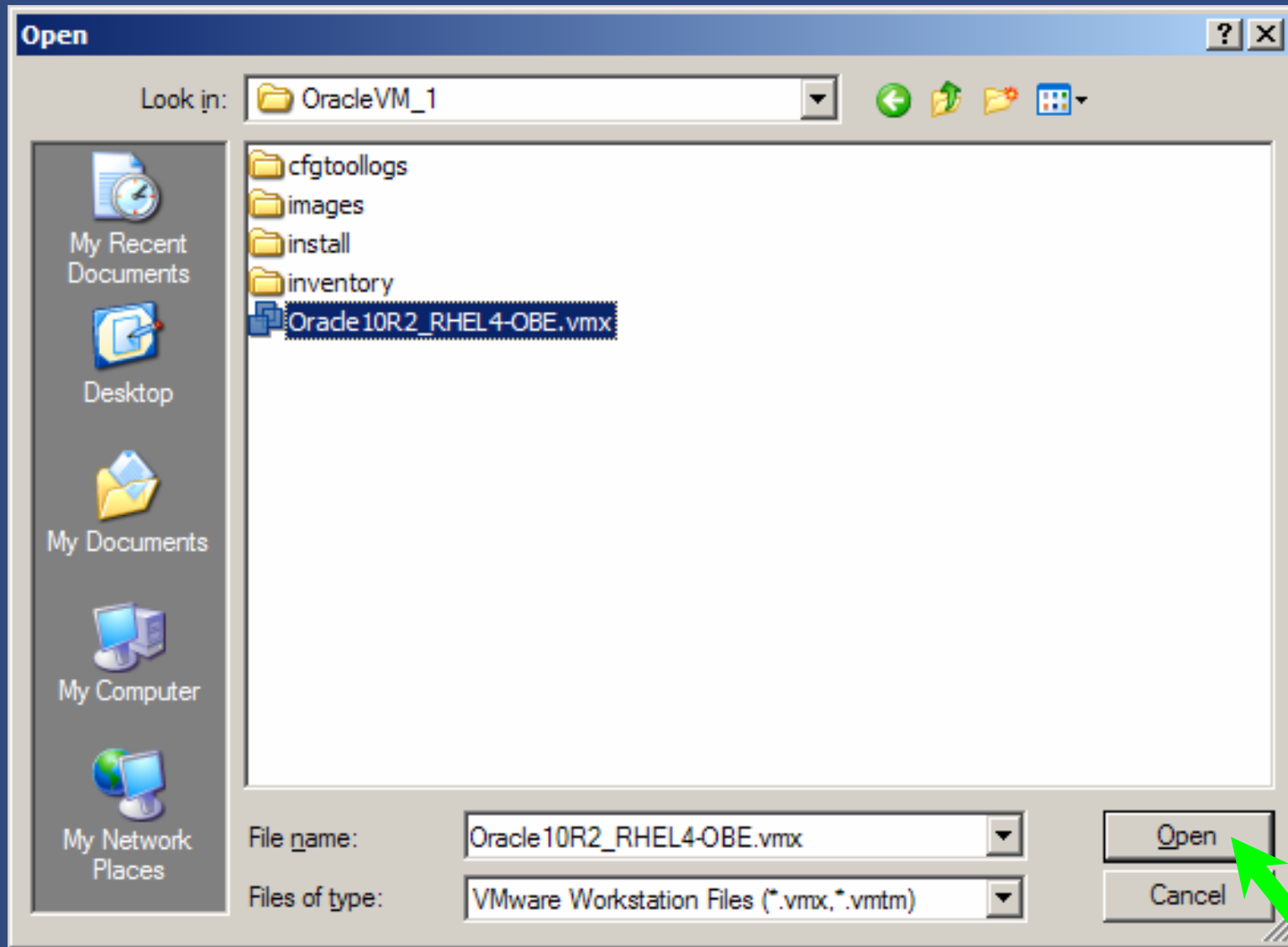












Oracle10R2_RHEL4-OBE - VMware Workstation




File Edit View VM Team Windows Help

Home Oracle10R2_RHEL4-OBE

Oracle10R2_RHEL4-OBE

State: Powered off
Guest OS: Red Hat Enterprise Linux 4
Configuration file: C:\OracleVM_1\Oracle10R2_RHEL4-OBE.vmx
Version: Current virtual machine for VMware Workstation 5.0.0
Snapshot: Powered Down Snapshot

Commands

-  Start this virtual machine
-  Edit virtual machine settings
-  Clone this virtual machine

Notes

Red Hat Enterprise Linux 4 AS 2.6.9-5.EL (HZ=100)
Oracle Database Release 2 10.2.0.1
Real Application Clusters (RAC)
Oracle Clusterware and High Availability API
Automatic Storage Manager (ASM)
Oracle Secure Backup 4.1 beta build 050705
Oracle HTML DB 1.6.1.0.3
Oracle JDeveloper 10.1.2 Build 1811
Oracle Warehouse Builder 10.1.2

Devices

Memory	720 MB
Hard Disk (SCSI 0:0)	
Hard Disk 2 (SCSI 0:1)	
Hard Disk 3 (SCSI 0:2)	
Hard Disk 4 (SCSI 0:3)	
Hard Disk 5 (SCSI 0:4)	
CD-ROM (IDE 1:0)	Auto detect
Floppy	Using drive A:



Red Hat **Enterprise Linux**

Username:

Please enter your username



Oracle10R2_RHEL4-OBE - VMware Workstation

File Edit View VM Team Windows Help

Home Oracle10R2_RHEL4-OBE

Applications Actions Tue May 23, 12:22 AM

Start Here

Computer

oracle's Home

Trash

Enterprise Manager Database Control

SQL*Plus

JDeveloper 10.1.2

HTMLDB 1.6

VMWARE_ORACLE1
0G

VMware Tools Properties

Oracle10R2_RHEL4-OBE - VMware Workstation

File Edit View VM Team Windows Help

Home Oracle10R2_RHEL4-OBE

Applications Actions

Wed May 24, 7:40 PM

Oracle by Example Series - Mozilla

File Edit View Go Bookmarks Tools Window Help

Back Forward Reload Stop file:///home/oracle/obe/index.htm Search Print

Home Bookmarks On This Machine Oracle Red Hat VMware

ORACLE **10g** **Oracle by Example Series: Oracle Database 10g**
DATABASE

The Oracle by Example series provides step-by-step instructions on how to perform a variety of tasks using Oracle Database 10g. The Oracle by Example series reduces the time spent investigating what steps are required to perform a task. Because the step-by-step solutions are built for practical real world situations, not only is knowledge gained through valuable hands-on experience, but also the solutions presented may then be used as the foundation for production implementation, dramatically reducing time to deployment.

To view the list of lessons for a particular Focus Area, click on the link below.

Focus Areas

- [Availability](#)
- [Security](#)
- [Business Intelligence and Data Warehousing](#)
- [Manageability](#)
- [Application Development](#)
- [Extended Data Management](#)

Done

[VMware Tools Properties] oracle@raclinux1:/etc/rc. Oracle by Example Series

Oracle10R2_RHEL4-OBE - VMware Workstation

File Edit View VM Team Windows Help

Home Oracle10R2_RHEL4-OBE

Applications Actions Wed May 24, 7:43 PM

Oracle Enterprise Manager - Mozilla

File Edit View Go Bookmarks Tools Window Help

Back Forward Reload Stop http://raclinux1.us.oracle.com:1158/em/console/logon/logon.jsessionid=c0a8cb0b4867d444e98db9 Search Print

Home Bookmarks On This Machine Oracle Red Hat VMware

ORACLE Enterprise Manager 10g Database Control [Help](#)

Login

Login to Database:RACDB

* User Name
* Password
Connect As

Copyright © 1996, 2005, Oracle. All rights reserved.

Done

VMware Tools Properties oracle@raclinux1:/etc/rc.d Oracle Enterprise Manage

Oracle10R2_RHEL4-OBE - VMware Workstation

File Edit View VM Team Windows Help

Oracle10R2_RHEL4-OBE

Applications Actions Wed May 24, 7:44 PM

Oracle Enterprise Manager (SYS) - Cluster Database: RACDB - Mozilla

File Edit View Go Bookmarks Tools Window Help

http://raclinux1.us.oracle.com:1158/em/console/rac/racSiteMap?type=rac_database&target=RACDB Search Print

Home Bookmarks On This Machine Oracle Red Hat VMware

ORACLE Enterprise Manager 10g Database Control

Setup Preferences Help Logout

Database

Logged in As SYS

Cluster Database: RACDB

Home Performance Administration Maintenance

Latest Data Collected From Target May 24, 2006 7:44:06 PM Refresh View Data Automatically (60 sec)

General

↑ Shutdown

Status **Up**

Instances 2 (↑ 2)

Availability (%) 99.18 (Last 24 hours)

Cluster cr3

Time Zone EDT

Database Name RACDB

Version 10.2.0.1.0

Oracle Home /u01/app/oracle/product/10.2.0/db_1

Host CPU

Load 1.18

Active Sessions

Maximum CPU 2

Diagnostic Summary

Interconnect Findings 0

All Policy Violations 18

Space Summary

Database Size (GB) 1.473

Problem Tablespaces 0

Segment Advisor Recommendations 0

Space Violations 0

High Availability

Last Backup n/a

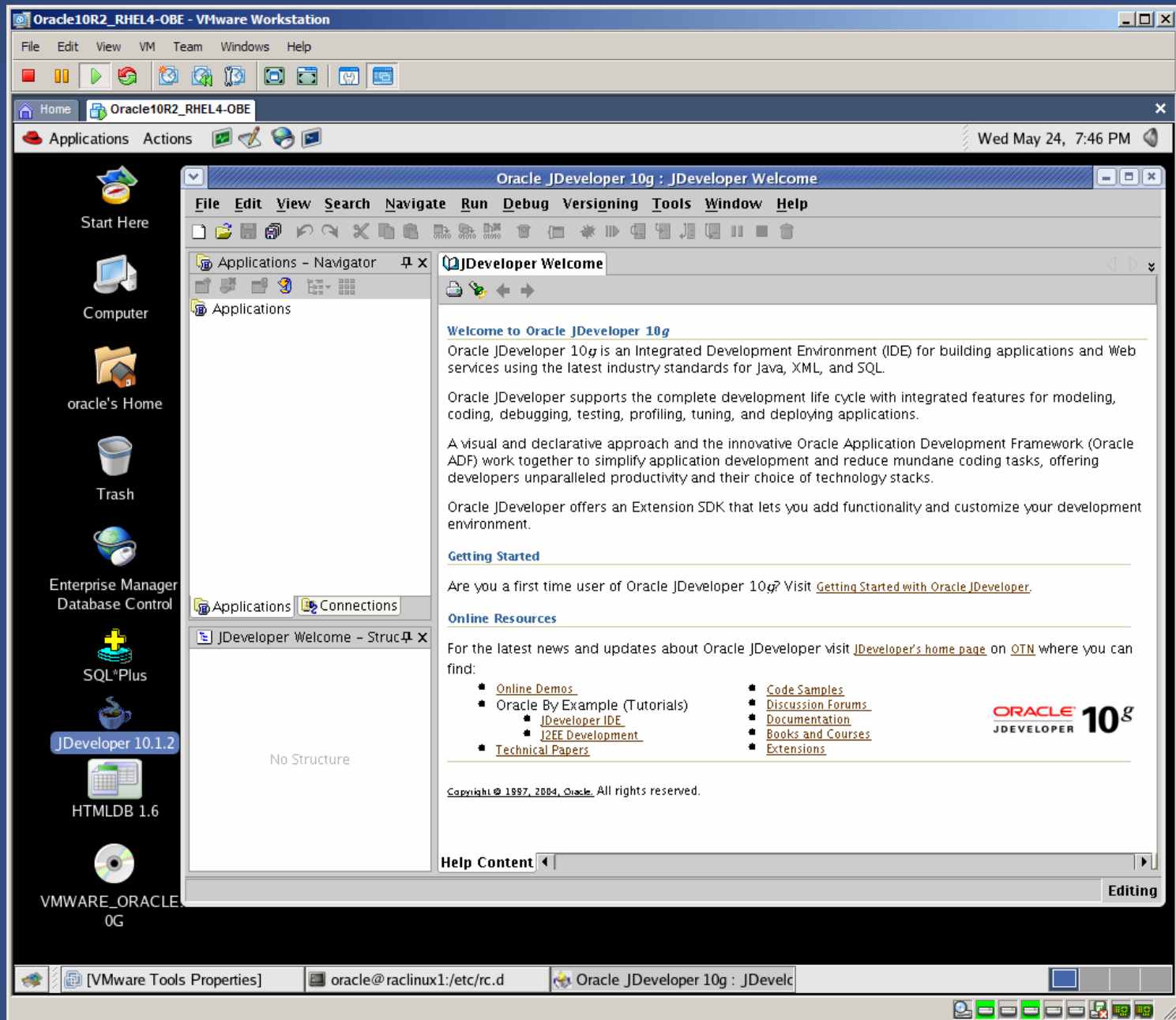
Flashback Logging Disabled

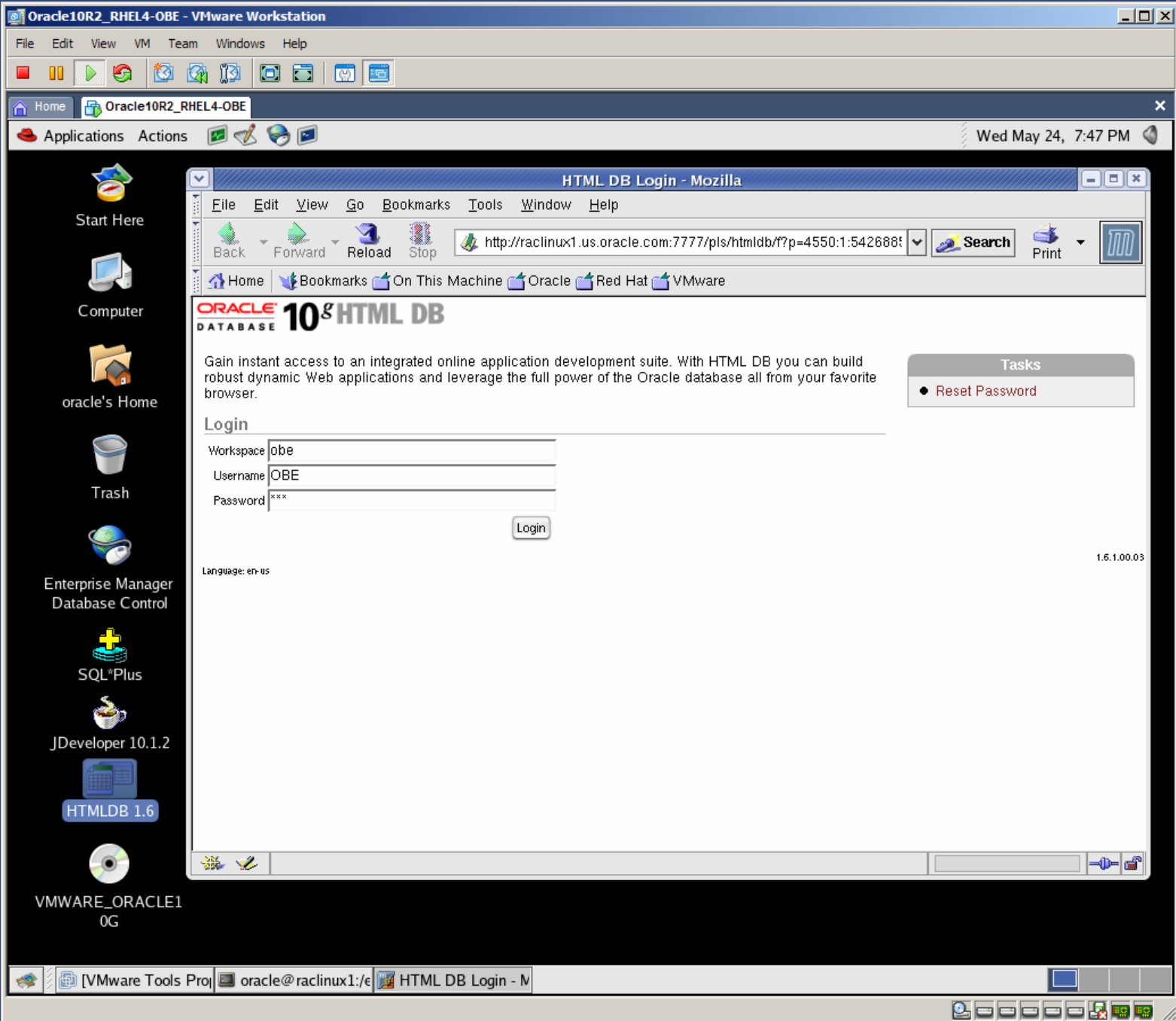
Alerts

Category All Critical 2 Warnings 2

Severity	Target Name	Target Type	Category	Name	Message	Alert Triggered
Critical	RACDB	Cluster	Agent Side	Status	Failed to connect to the local instance (ignoreable): ORA-12505: TNS:listener does not currently know of	May 23, 2006

[VMware Tools Properties] oracle@raclinux1:/etc/rc.d Oracle Enterprise Manager (SYS) - Cluster D:





Oracle10R2_RHEL4-OBE - VMware Workstation

File Edit View VM Team Windows Help

Oracle10R2_RHEL4-OBE

Applications Actions Wed May 24, 7:49 PM

Start Here
Computer
oracle's Home
Trash
Enterprise Manager Database Control
SQL*Plus
JDeveloper 10.1.2
HTMLDB 1.6
VMWARE_ORACLE1 0G

HTML DB Home - Mozilla

File Edit View Go Bookmarks Tools Window Help

Back Forward Reload Stop <http://raclinux1.us.oracle.com:7777/pls/htmldb/f?p=4350:1:5426888> Search Print

Home Bookmarks On This Machine Oracle Red Hat VMware

ORACLE DATABASE 10^g HTML DB

User: OBE Logout Help

Workspace OBE

Application Builder SQL Workshop Data Workshop

Workspace Administration

- Change Password
- Manage Users
- Manage Workspace
- About HTML DB
- Review Demonstration Applications

Workspace Schemas

- OBE

Applications

Find Rows 10 Find

Application	Name	Page Count	Updated	Updated By	Run
100	Sample Application v1.6	21	11 months ago	admin	

1-1

1.6.1.00.03
Language:en-us Copyright © 1999, 2004, Oracle. All rights reserved.

Done

[VMware Tools Pro] oracle@raclinux1:~ HTML DB Home - t

Passwords

<u>Account Type</u>	<u>User Name</u>	<u>Password</u>
OS	root	oracle
OS	oracle	oracle
DB admin	SYS	oracle
DB admin	SYSTEM	oracle
HR user	HR	hr
OE user	OE	oe
SH user	SH	sh
HTML DB user	OBE	obe (workspace obe)
Secure Backup admin	admin	<no password>

All account passwords are set to oracle unless otherwise specified.

Useful Notes

- O/S startup script: `/etc/rc.d/rc.local`
- User startup script: `~oracle/.bashrc`
- CRS automatically starts RAC
- Cluster status: `crs_stat2`
- Manual instance startup:
 - `svrctl start instance -d RACDB -I RACDB1`
 - `svrctl start instance -d RACDB -I RACDB2`
- IP: `192.168.203.11` & `192.168.203.111`
- Service name: `RACDB` (port 1521)

Make It Stop!

A safe shutdown is performed just like on a real Linux server:

- 1) Open a terminal window
- 2) `su - {password: oracle}`
- 3) `/sbin/shutdown -h now`



The logo for the Suncoast Oracle Users' Group. It features the word "SUNCOAST" in blue, "ORACLE" in white on a red rectangular background, and "USERS' GROUP" in blue. The text is set against a white background with a large, glowing yellow circular arc behind it.

SUNCOAST
ORACLE
USERS' GROUP

Monthly
4th Thursday
6pm – 8pm

IBM Center
Rocky Point

[WWW.SOUUG.NET](http://www.souug.net)